



Volume 1, Issue 1

Newsletter of the Saline County History & Heritage Society

Spring 2015

Special points of interest:

- SCHHS begins newsletter
- New Civil War marker to be dedicated
- President Tom Blackburn recognizes Saline County Judge Lanny Fite's contributions to SCHHS
- End of Year Dinner Held
- Historic Preservation tour to be in Benton in March



Inside this issue:

Civil War Marker	1
County Judge Fite Shown Appreciation	2
Downtown Mural	2
End of Year Dinner	3
New Officers for 2015	3
Scenes of Saline	4
March 2015 Walking Tour	4

Saline County History & Heritage Society Begins Newsletter

With this issue Vol.1 No. 1 the Saline County History & Heritage Society begins publication of a newsletter to keep our membership informed of upcoming events and programs of the Saline County History & Heritage Society and historical events in the county.

We hope to have photos of our meetings, spotlight our members and share information about the history of our county.

Our journal *The Saline* edited by Marlo Bush Krueger will continue to offer detailed stories of interest to our members two times each year.

This newsletter will be sent to your e-mail four times a year. The photo in

the banner shows the second courthouse and the third jail of Saline County. The name of the newsletter will be the Salt Shaker since our county was named for the early salt mines in the county.

This will be another benefit of membership in our society and we hope you will enjoy reading it

It will also be available on our new website which will soon be live.

The Saline, the Salt Shaker, and our Facebook page will hopefully keep you informed and entertained on the history of our beloved Saline County.....Steve Perdue



The above photo is of the Saline County courthouse in 1906 courtesy of the Steve Perdue collection .

SCHHS Sponsors Civil War in Saline County Marker

Steve Perdue and members of the SCHHS board have worked tirelessly to have a Civil War in Saline County marker placed on the courthouse lawn. The marker was

acquired by a grant from the Arkansas Civil War sesquicentennial commission and a community grant secured by Representative Kim Hammer.

The marker will arrive in

December and the dedication will be held soon.

Special thanks is also due Saline County Judge Lanny Fite for his assistance with this project.

President Tom Blackburn Awards Certificate to Outgoing Saline County Judge Lanny Fite

In the August 21, 2014 meeting of the Saline County History & Heritage Society, outgoing President Tom Blackburn presented outgoing Saline County Judge Lanny Fite with a certificate of commendation for his outstanding support of the Saline County History & Heritage Society. Judge Fite has helped the society preserve county records, he has helped the society secure a location where the county archives can be stored and preserved; and has offered assistance for the society in securing grants. Judge Fite has encouraged the society to continue to preserve and publish Saline County records and provide assistance to people who have Saline

County roots. Saline County History & Heritage Society has saved many Saline County records from being destroyed and has made them available to people to search in their quest for information on families or events in the county.

Throughout Judge Fite's 16 years of service to Saline County he has always remembered the Saline County History & Heritage Society.

As Judge Fite leaves the office of county judge to take a seat in the Arkansas House of Representatives, we wish him the best in the future.



Eating Out in Benton in the 1930's, 1940's, 1950's, & 1960's

On October 16, Steve Perdue presented the program *Eating Out in Benton in the 1930's, 1940's, 1950's & 1960's*. The program featured photos of Benton Restaurants from 1930 to 1960's. Some of the restaurants featured were The Triangle Bar B Que, DeSoto Café, Lone Star Café, The Blue Bell, The Dairy

Queen, The Whopper Burger, Snearley's, El Cena Casa, Minute Man, Post Office café, and many others.

Here is a photo from that presentation.



TRIANGLE BAR-B-Q - 1940
Chester Hankins, Owner

Downtown Mural of Benton, Arkansas Progressing

This article courtesy Saline County Lifestyles

With a history that includes explorations by European explorer Hernando DeSoto, a rich tradition of Native American culture and an occupation during the Civil War, Benton has not been at a loss for an interesting heritage.

Most of the events, significant dates and key players can be studied and researched in books or through online searches. However, residents of Benton will soon have another way to experience their history.

through a new outdoor mural slated for completion this fall.

The mural is planned for Benton's Bell Building, currently owned by John Young, and has been a group effort led by artist Dianne Roberts and fundraiser Freddy Burton.

The inspiration for the project, though, came from a casual conversation between Burton and a member of one of Benton's legacy families, 97-year-old Arlene Rainey.

"We were together at an event at Herzfeld Library," Burton said. "And she told me, 'Every time I leave the bank (the Bell Building wall) just speaks to me. It's saying, 'Put something on me.'"

Rainey refuses to take credit for the idea, but the mural project took off from that one conversation. Burton would handle the fundraising for the mural's completion, and Roberts would illustrate Benton's history for all to experience.

Our Rich History

The Downtown Benton Mural Project

"I've been working on the mural for about a year, in between my own work," Roberts said. "We started with only an idea. I've put things in and taken things out because it can't cover everything. It would just be too big!"

The owner of her own art studio and gallery, Roberts understands how important history is to the people of Benton. A high school art teacher in the 1970's, she's remained heavily involved in community projects both through her work and her time

volunteering at the Gann Museum. So, for her, getting the mural correct is of utmost importance.

"It's a story of the Saline River and how it affected the early people who lived here from about 1500 to 1900," she said. "The River runs through the back of the mural, showing how everyone lived close to it. Businesses were close because that's how you transported things. The Native Americans and early settlers also started there."

Roberts includes the agricultural base for the region that includes cotton and timber. She also chose to pay special attention to the pottery industry. "We had 13 potteries here. Pottery was the main industry for a long time till the time we end the mural."

"With a project spanning 400 years, Roberts also includes transportation, beginning with the Saline River, expanding through the railroad and concluding with roads."

Society Holds End of Year Dinner at Western Sizzlin on November 20

The Saline County History & Heritage Society held its final meeting of the year on Thursday, November 20 with a dinner held at the Western Sizzlin restaurant on Military Road in Benton. Seventeen members and guests attended the end-of-year meeting. Outgoing President Tom Blackburn welcomed the group and expressed his thanks to everyone who had helped to make the society a success these past two years.

A great time of fellowship was had by all. It was announced at the dinner meeting that Steve Perdue would be taking over the presidency of the society for the year 2015. Steve Perdue expressed his thanks to

Tom Blackburn for his service to the society and welcomed support in the coming year.

Here are some photos from the evening.



Above is George and Margie Akins, Bob and Carolyn Wise, Leon Moore and guest, Tom and Gail Blackburn, Carolyn Earl Billingsley, and Marlo and Jim Krueger. At left is Betty Walden, Mr. and Mrs. Milton Scott, Virginia White, and Linda Everett.

January and February 2015 Programs

Jan. 15th program will be presented by Marlo Bush Krueger on the Shoppach family of Saline County, Arkansas.

Feb. 19th program will be presented by John Machycek, owner of J & B book bindery in Little Rock. He will review the preservation work done at the bookbinders. Machycek remembers the oldest item he's worked with is a French book that dates from the 12th Century.

SCHHS members are invited to bring a book that needs to be restored to the meeting for an evaluation.

The programs will begin at 7:00 pm at the SCHHS research center located at 123 North Market Street.

New officers and Board Members Take Office in January

A new slate of officers and board members will take office in January.

Here are your new officers of the Saline County History & Heritage Society:

President-Steve Perdue, 1st Vice

President Shirley Coppock, 2nd Vice President Freddy Burton, Secretary Virginia White, Treasurer George Akins. Board members Regina Burks, Robert Edwards, and Marlo Krueger. Editor of *the Saline* will be Marlo Krueger and Librarian will be Pauline Brown. This group will be assisted by volunteers who keep the organization running.

Please renew your membership to keep the organization going by mailing your 2015 dues to the Saline County History & Heritage Society Inc., P.O. Box 1712, Benton, AR. 72018.

We appreciate your continued support.

SALINE COUNTY HISTORY & HERITAGE SOCIETY

P.O. Box 1712
Benton, AR. 72018

Research Room
123 North Market Street

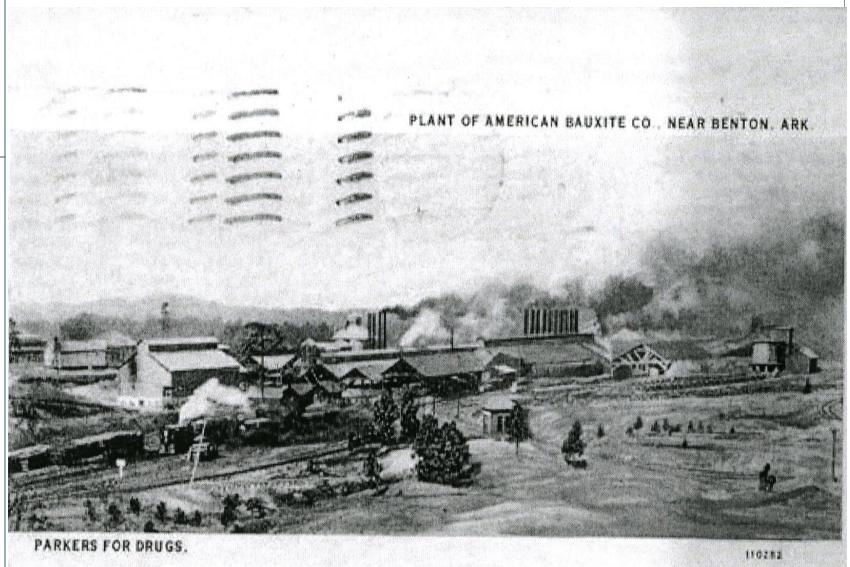
Phone: (501) 778-3770

Website:



Scenes of Saline County, Arkansas

This section of the newsletter will feature photos of places and families in Saline County, Arkansas. The postcard below shows the American Bauxite Company in Bauxite c. 1910



Arkansas Department of Historic Preservation to Conduct Walking Tour of Downtown Benton on Saturday, March 21, 2015

The Arkansas Department of Historic Preservation has announced a downtown walking tour of Benton, Arkansas on Saturday, March 21, 2015. The walk will be co-sponsored by the Saline County Library and the Saline County History & Heritage Society. The Arkansas Department of Historic Preservation conducts tours all over Arkansas to point out significant historic structures in cities and town. We are very pleased that this state agency has

chosen Benton, Arkansas. We hope to showcase many of our historic buildings and introduce our historic town to the rest of the state.

Rachel Silva of the Historic Preservation department will conduct the tour.

We are also hoping to soon have a tour of our downtown area on our website which will highlight the historic buildings and events of the downtown area.

The new Mural will hopeful-

ly be complete by that time and it will be one of the highlights of the tour.

More details will be announced as the tour gets closer. Watch our website as it unfolds and the local papers as we make announcements about this tour.

The tour will begin at 11:00 am and will last until 1:00 pm.

This tour should be one of the highlights of 2015.