



Special points of Interest:

- Saline County History & Heritage celebrates its 30th anniversary.
- The Salt Shaker wins best newsletter.
- Saline County Politics Program
- Arkansas Genealogical Society to meet in Benton.
- Program schedule

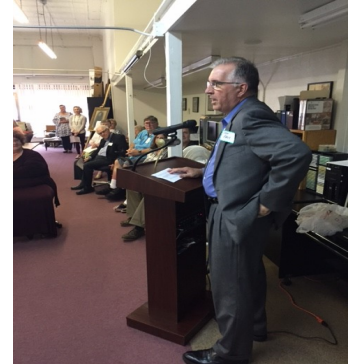


Inside this issue:

SCHHS celebrates 30th	1
Salt Shaker wins state award	1
Saline County Politics Through the years	2
B-17 Memorial program presented	2
Arkansas Genealogical Society Fall Conference	3
Spotlight on Volunteers	3
Col. Gibbons house in Bauxite c. 1910	4

Saline County History & Heritage Society celebrates 30 years of Preserving Saline County History.

On Sunday, April 17th, the Saline County History & Heritage Society celebrated the 30th anniversary of the founding of the society. President Steve Perdue served as mc. Eddie Landreth gave the opening invocation. Saline County Judge Jeff Arey, State Representative Lanny Fite, and State Representative Kim Hammer gave comments. Our guest speaker, Dr. Lisa Speer, the state historian of Arkansas who gave words of encouragement to the society. Dr. Carolyn Earle Billingsley and Russell Baker gave remarks on the founding of the society. Linda Everett and Shirley Coppock were in charge of refreshments. All had a good time.



Linda Everett and Shirley Coppock wait to serve and County Judge Arey speaks about SCHHS.



Dr. Speer and Representative Fite and Sherri and Brandon Sutton visit at celebration.

The Salt Shaker wins best newsletter in state from Arkansas Historical Association.

In April, the Arkansas Historical Association annual meeting in Little Rock, **The Salt Shaker** won the award as best newsletter of a historical society in the state. President Steve Perdue, who is

the editor of the newsletter, accepted the award from Tim Nutt, President of the Arkansas Historical Association.



Tim Nutt presents award to Steve Perdue.

July 21st program to feature Lib Carlisle and Saline County Politics over the years.

Saline County politics over the years has been any thing but boring. In the 1950's , Mr. Charles Smithers , the Democratic chairman for Saline County was the man to go to for information on the politics of the county. The Democratic primary usually chose the nominees for the county offices, because there were very few Republicans in the county. All over the county "speaking" were held where the county Democratic officials would have the different candidates to express their views to the voters. Each candidate would have their supporters out in the crowd to cheer. If the candidate won the Democratic primary he was almost assured to win the general election in November. In the 1960's after Mr. Smithers passed away,

Mr. Lib Carlisle became the county Democratic chairman for many years. In the 1990's , Mr. Carlisle became the chairman of the state Democratic party. As Saline County began to grow and more people moved in, the county began to reflect other southern states and gradually the county changed from Democratic to Republican. Mr. Carlisle will reflect on some of the more colorful politicians who were elected during the Democratic years.

The program will begin at 7:00 pm at the archives and family research center located at 123 North Market Street in Benton.

This should be an interesting program.



The late Saline county representative Lacy Landers gets ready to introduce Justice Jim Johnson. Photo courtesy Larry Adams.

Save the Rowland/Nelson/Smith/Lenz House

The Save the Rowland/Nelson/Smith/Lenz House was dealt a blow recently when they found out a request for a \$30,000 historic preservation grant was not successful. The groups President Grover Smith said the group was disappointed but would continue to work to get some help for the group. The group has

boarded up the windows with plywood and have secured some concrete blocks to keep people from driving up on the property. We hope the group continues to gain support and will continue to seek grants for the preservation of the house.



The William and Alwina Lenz Home on Highway 5 is now owned by Oscar Lenz.

Mr. Nelson Mears speaks to History & Heritage Society on the B-17 Memorial in Grant County.

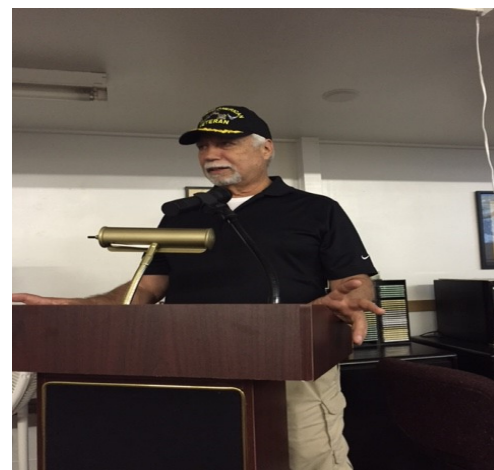
Mr. Nelson Mears the man who got behind the B-17 Memorial to veterans in Grant County spoke to the Saline County History & Heritage Society on May 19th.

Mr. Mears said there has been great attendance at the memorial which is monitored by cameras. People from all over Arkansas have visited the memorial and all are very impressed with the memorial. Mr. Mears also said the Glendol Jackson family had

played an important role in the marker. SCHHS Geraldine Jackson' son Jerry Glen Jackson who is deceased was honored for his work on the project. Members of the Jackson family attended the program.

A video was also shown of the memorial as well as slides of how the memorial was constructed.

A large crowd attended the presentation.



Arkansas Genealogical Society will hold its fall conference at the Benton Event Center on Friday and Saturday October 14-15th.

On October 14 and October 15, the Arkansas Genealogical Society will hold its annual fall conference at the Benton Event Center in Benton, Arkansas.

The Arkansas Genealogical Society has been in existence since 1962 and has served as the place to go when looking for your ancestors.

The speaker this year is noted genealogist J. Mark Lowe of Tennessee.

Lowe has been a popular presenter at genealogical conferences all over the United States. His expertise is in Kentucky and Tennessee records, and since many early Arkansans came through Tennessee before settling in Arkansas, he is a good choice to be presenter.

You can check out the Arkansas Genealogical Society's website for more information. The website is found at www.agsgenealogy.org.

You will also be able to see how to sign up for the conference on the website.

The conference has a Friday evening session and then all day Saturday. Jeff Meek will present the Friday sessions on interviewing veterans and the Saturday sessions will begin at 9:00 am with "Don't County Me Out: Finding Estate Settlements; Taxes Rule the World: Property, Poll, AdValorem, Permission; The Migration Triangle: Virginia, North Carolina, South Carolina, Kentucky, and Tennessee: and the last session Is It Really Online? How to Find and Use Authentic Sources at home or in the Library. Over night guest can get a special rate at the Fairfield Inn and a lunch can also be ordered for Saturday.

Make your plans now to attend the Fall Conference.



J. Mark Lowe

Saturday Presenter

Spotlight on SCHHS Volunteers



Pete and Shirley Parson Coppock

Our society has many volunteers who help our society to succeed. This time we feature Mrs. Shirley Parson Coppock. Shirley serves as 1st Vice President of the Saline County History & Heritage Society and in that position she helps to secure programs each month, often times she presents programs that she developed. Shirley also is very good getting the society coverage in the *Saline Courier*. Shirley worked as a reporter for the *Saline County News*. She covered all sorts of stories in the sixties and seventies, but she always was interested in those that were about history. She has written a book on the Shaw community in Saline County, she is an active member of her church, Saline Missionary Baptist in Tull. She has held many offices in the local D.A.R. and on the state level of D.A.R. She also works with the Bauxite Ladies Association, a group which provides scholarships to young Bauxite students. She is a great asset to our society and is part of the village that keeps SCHHS going. She lives in the Tull community with her husband Pete. The couple has one daughter and one granddaughter. Thank You Shirley for all you do for SCHHS.

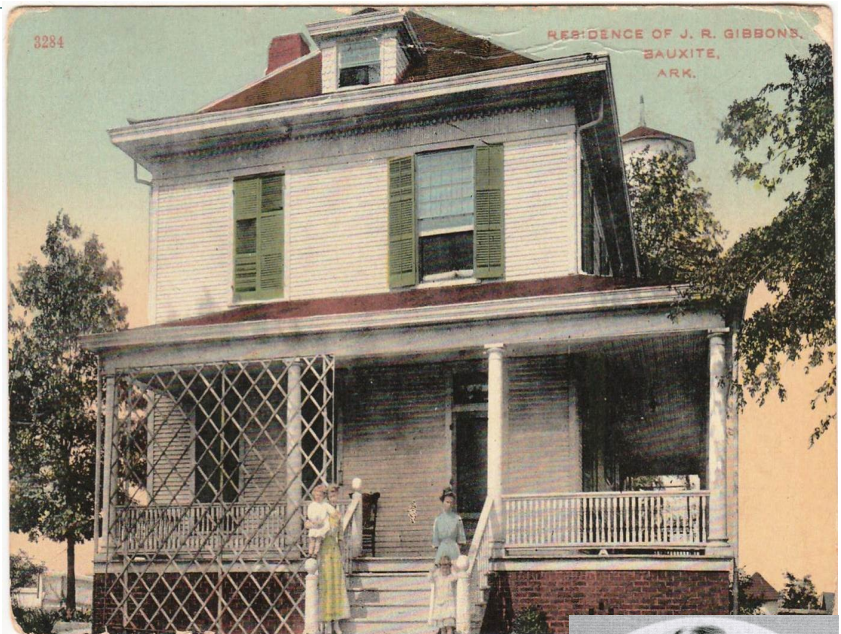
SALINE COUNTY HISTORY & HERITAGE SOCIETY

Scenes of Saline County, Arkansas

P.O. Box 1712
Benton, AR. 72018

Research Room
123 North Market Street

Phone: (501) 778-3770
Website: www.schhs.us



The John Rison Gibbons House in Bauxite c. 1910. This photo courtesy of Steve Perdue.

Program schedule announced through September 2016

30th Anniversary Photos

Shirley Parson Coppock, SCHHS 1st Vice President has announced the following programs through September 2016.

On July 21st, Lib Carlisle former Chairman of the Arkansas and Saline County Democratic Party will talk about Saline County politics .

On August 18, Russell Baker, retired Archival Manager of the Arkansas History Commission will speak on a topic to be deter-

mined.

On September 15th, Steve Perdue will present a program on the history of the Bauxite First Baptist Church.

All programs are open to the public and they are held on the third Thursday of each month except November and December. The meeting time for each program is 7:00 pm at 123 North Market Street in downtown Benton.



Doyle Ritchie as William

Lockhart and Grover and Betty Smith provided music

