



Special points of

Interest:

- Saline Crossing observes 200th Anniversary of Settlement in County.
- July program: Paron Tornado
- August program: New Hope Community
- Palace Theater in Danger
- Bauxite Reunion



Inside this issue:

Saline Crossing 200th Anniversary	1
Research Center	2
Volunteers	2
New Hope Community	2
The Palace Theater	3
Scenes of Saline	4
Bauxite Reunion	4

Saline Crossing observes 200th Anniversary of Settlement in County

On May 29 and 30, the Saline Crossing organization in Benton observed the 200th anniversary of the founding of Saline County with a 6K race and the Arkansas Living History Re-enactors recreating the Saline Crossing settlement on the banks of the Saline River.

Friday, May 29, former Mayor Lynn Moore, who serves as president of the Saline Crossing group, provided tours to the Saline River. On Saturday, May 30th, a 6K race was held and the cutting of a cake commemorating the 200th anniversary of the founding of Saline Crossing was held.

It was a great two days and all who attended en-

joyed the events. The Saline County History & Heritage Society is always happy to promote Saline County history and congratulations go to this group for their efforts.



What it might have looked like at the Saline Crossing in 1815.



SCHHS Program in July to look at Paron Tornado in March of 1952

Diana Williams Butler, a member of SCHHS, will present a program about her memories of a Paron tornado that, destroyed the Williams family property in 1952 and the Pen-

tecotal Church in Paron.

We are always aware of tornados in Saline County and the destruction they can cause. The program will be held on Thursday, July 16, 2015, at 7:00 pm

at the SCHHS archives and research center at 123 N. Market Street in downtown Benton.

Hope you will make plans to attend.

Have you been to the Family History & Archives Research Room ?

When was the last time you paid a visit to the Saline County History & Heritage Society Family History & Archives Research Room? Well, that's too long!

The room is full of wonderful Saline County treasures; we have probate files, family files, civil war records, microfilm, and photo collections. We have obituary notices, circuit court records, high school annuals and historic artifacts.

We also have Saline County marriage records, and many other Saline County records, including a vertical file of Saline County communities and an every-name index to *The Saline* the journal of the Saline County History & Heritage Society.

The *Benton Courier* also available on microfilm for research.

Our dedicated members are available to help you Tuesday, Wednesday, and Thursday of each week except holidays.

We are located at 123 North Market Street in downtown Benton. Our hours are 9:00 am to 2:00 pm Tuesday, Wednesday, and Thursday of each week.

On Tuesday our librarian Pauline Brown and Carolyn Wise, Wednesday finds, Gail Blackburn, Marlo Bush Krueger, and George Akins, and Thursday is Robert Edwards and Linda Everett.



Meet the Members

Saline County History & Heritage Society could not exist without volunteers. One of those who works tirelessly for the Saline County History & Heritage Society is Carolyn Wise. Carolyn and husband Bob are always ready to help with projects for the historical society. Carolyn works as a volunteer on Tues-

days in the research room, helping to cut out obituaries in the *Courier* and articles of Saline County history for our vertical files. She contributes many hours each year to our society and we appreciate her efforts.

If you would like to volunteer on a

project at the research room or just be a greeter for visitors who come in for research, we would love to have your help. The research room is open Tuesdays, Wednesdays, and Thursdays from 9:00 am to 2 pm. Call us at 778-3770 if you would like to volunteer.

New Hope Community of Saline County August Program

Shirley Coppock, 1st vice president of the SCHHS, will present a program on August 20th on the New Hope Community of Saline County.

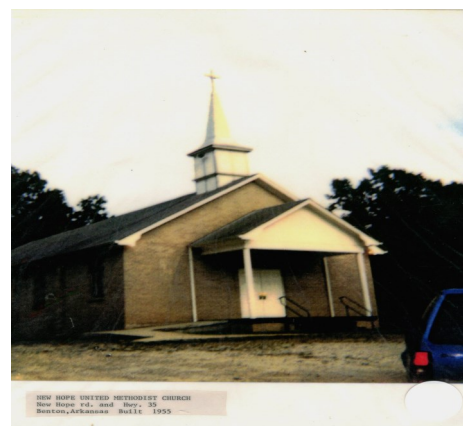
The program will also include information on Bennett and Social Hill communities.

The Bennett community contained a school and was also the area where Bennett pottery was located in the early 1900s. The Social

Hill community contained the Social Hill Missionary Baptist Church.

This area is now in the Benton city limits, but it has an interesting past.

The program will be held Thursday, August 20th at 7:00 pm at the Saline County History & Heritage Family History and Research Center located at 123 North Market Street in downtown Benton.



The Palace Theater has Historic Past

It was with sad hearts that on June 8th the Benton City Council announced that the old Palace Theater would be torn down in 90 days if no one came forward with a plan to restore it. The Palace Theater opened on Friday, March 5, 1920. Construction began in 1919.

The building housed the Benton city auditorium, the Play Palace, Panther Den and, for thirty-six years, the Saline County Library (1967-2003). The building was used to store costumes for the Royal Players in recent years.

The first movie shown in the theater was "In Walked Mary," a movie about a southern girl who goes north. The movie starred June Caprice and was a silent film. The theater played the musical score with an organ or piano while the movie showed captions on the screen.

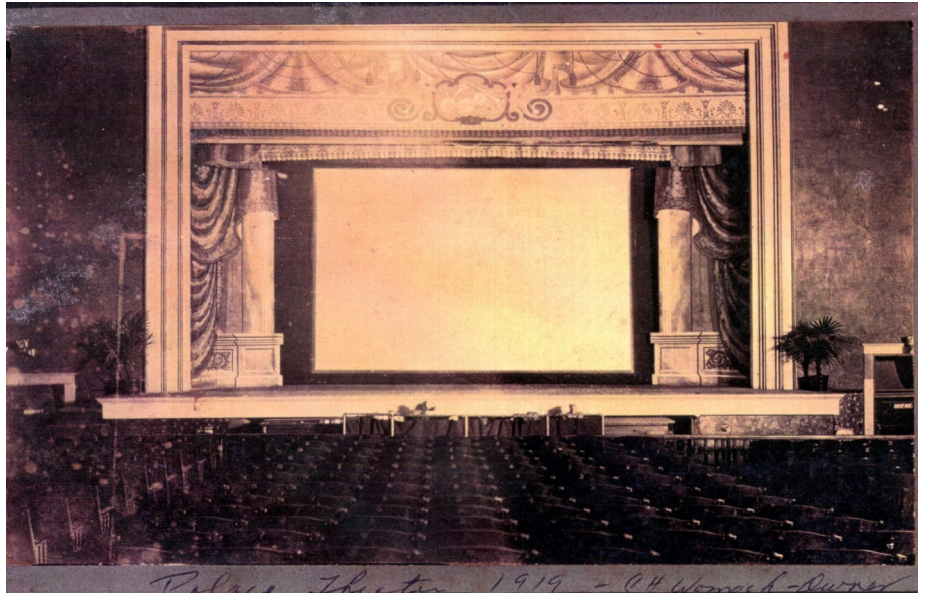


Photo courtesy Freddie Burton

This photo shows the inside of the Palace Theater in all its glory.



This was the first building of the Saline County Library. Previously the library was called the Benton Gann Memorial Library, and was a city library. In 1966 an effort was made by Mr. Arthur B. Holiman and others to have the old Palace Theater made into the Saline County Library. The library board had previously only included Benton citizens, but the effort was made to make it a county library so the board was enlarged to include members from the county. The library opened in January of 1967, but the official dedication of the library was not held until October 15, 1967, when then U.S. Senator J. William Fulbright could give the dedicatory address.

As the years progressed, the library expanded to a branch at Bryant and finally an effort was made to build a new library.



Courtesy Saline County Library

Saline County Library

1967-2003

SALINE COUNTY HISTORY & HERITAGE SOCIETY

P.O. Box 1712
Benton, AR. 72018

Research Room
123 North Market Street

Phone: (501) 778-3770
Website: www.schhs.us



Scenes of Saline County, Arkansas

This section of the newsletter will feature photos of places and families in Saline County, Arkansas. The photo below is of the W.A. Prange farm in the Avilla community c. 1970.



Bauxite Held its annual Bauxite Reunion on May 23

Bauxite Historical Association and Museum held its annual Bauxite Reunion on Saturday, May 23 at the historic Bauxite Community Hall. Former residents and people who attended school there attended from all over the United States. More than 200 people attended according to officials. The featured speaker was Sherri Fite McAdow, who was the daughter of former Bauxite High School teacher Carl Fite. Also a memorial service for veterans was pre-

sented by the Bauxite Class of 1965. Steve Harris and Frank Green were in charge of the memorial veterans service.

It was a good time had by all as you heard the words, "Do You Remember" or "You have not changed a bit"

The Bauxite Historical Association and Museum preserves the history of the old Bauxite community .

The reunion is always held on the Memorial day week-

end. Bauxite Community



Courtesy Bauxite Historical Society

Hall c. 1960 pictured above.

The Saline County History & Heritage Society supports the heritage of Saline County communities.